

The excellent performance of the pressure seal type range, is optimal in high pressure and high temperature applications.

Features

- Swing check valves can fit on both horizontal and vertical (up-flow) piping.
- Lift check valves (T and Y patterns) are designed to be installed on horizontal piping.
- Tilting disc check valves are designed to prevent the disc slamming and to ensure, at the same time, a quick closing service.
- Valve body is manufactured in various materials (NACE compliance included), and designed to always guarantee the maximum safety and flow efficiency.
- A perfect body-bonnet tightness obtained due to the technologically advanced pressure seal bonnet design.
- Seat rings are seal welded to the body.
- Connections are offered as butt weld, flanged or special, such as clamp type, to meet any customers' request.
- Valves designed according to ASME B16.34 with wall thickness according to API 600.



Technical data

Pressure ratings	: from ASME 900 to 2500
Body materials	: carbon, alloy and stainless steels, duplex steels, special alloys
Temperature (°C)	: -46 to + 650
Sizes (mm)	: 50 to 600 and larger

Connections standards

Flanges	: ASME B16.5
Buttweld	: ASME B16.25

General application

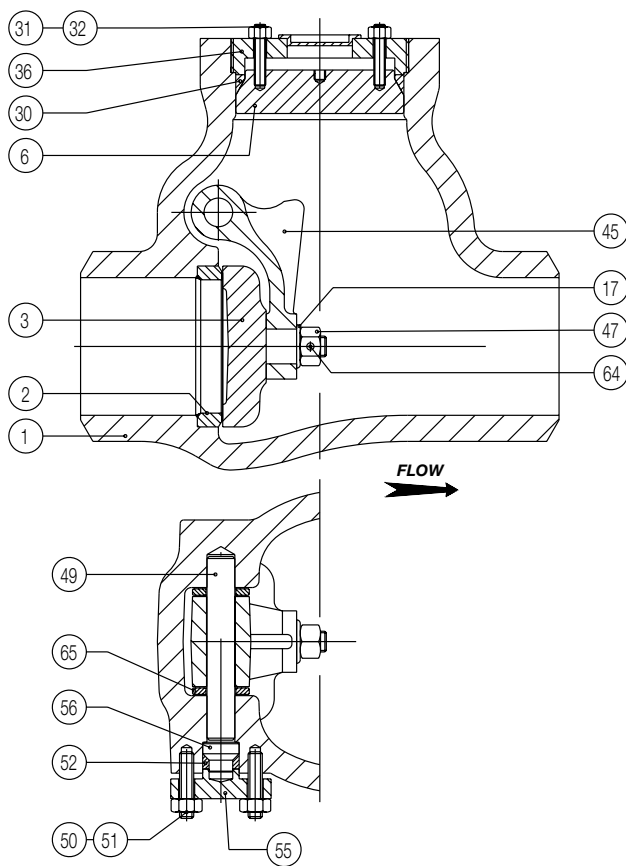
The high quality Fasani valves are installed on a large variety of applications, particularly in those requiring suitability to very high pressures and temperatures: steam, oil and gas processing, chemical and petrochemical industry and in the power industry.

The Fasani valves are successfully installed worldwide on applications requiring flow reversal prevention.

Check Valves

Cast high pressure -Style B-

Swing Check Valves



Notes

1. Other materials are available on request. Please consult supplier.

Material selection

Item	Description	Body in WCB	Body in WC6	Body in CF8M
1	Body	A216 WCB	A217 WC6	A351 CF8M
2	Seat Ring	A105 + AWS ER 430	A182 F22 + AWS ER 430	A182 F316
3	Disc	A216 WCB + AWS ER 430	A217 WC6 + AWS ER 430	A351 CF8M
6	Bonnet	A105	A182 F11	A182 F316
17	Washer	A182 F316	A182 F316	A182 F316
30	P.S. Gasket	Soft Iron Silver Plated	Soft Iron Silver Plated	A182 F316
31	Bolt	A193 B7	A193 B16	A193 B8
32	Nut	A194 2H	A194 4	A194 8
36	Bonnet Retaining Ring	A105	A182 F11	A182 F316
45	Hinge	A216 WCB	A217 WC6	A351 CF8M
47	Nut	A194 2H	A194 4	A194 8
49	Hinge Pin	A182 F6a	A182 F6a	A182 F316
50	Bolt	A193 B7	A193 B16	A193 B8
51	Nut	A194 2H	A194 4	A194 8
52	Pin Gasket	Flexible Graphite	Flexible Graphite	Flexible Graphite
55	Hinge Pin Cover	A105	A182 F22	A182 F316
56	Hinge Pin Plug	A182 F6a	A182 F6a	A182 F316
64	Split Pin	Steel	Steel	Stainless Steel
65	Spacer Ring	A182 F6a	A182 F6a	A182 F316

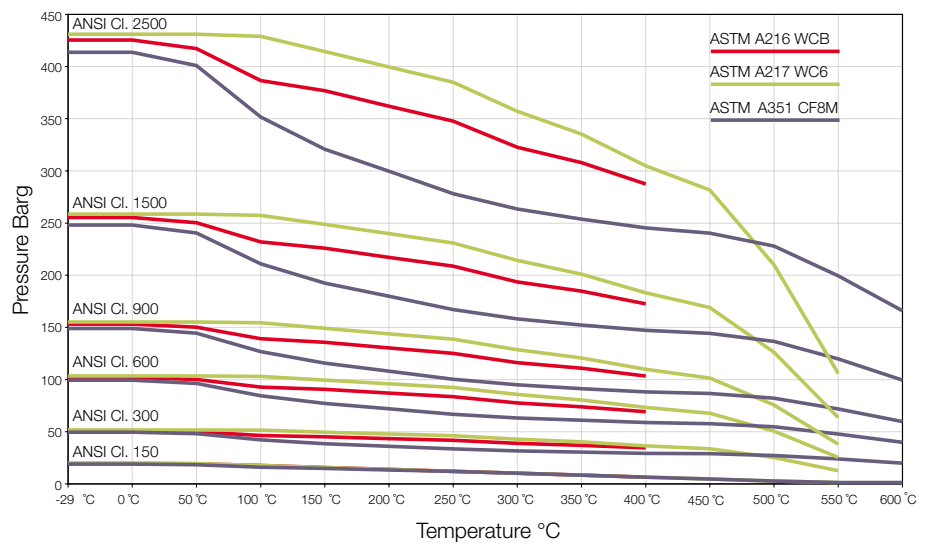
Check Valves

Cast high pressure -Style B-

Notes

All Fasani valves are fully rated in accordance with ASME B16.34. The table represented here indicates the pressure/temperature rating values as per ASME B16.34-1996.

Pressure/temperature ratings in barg/psig (ASME B16.34)



Trim

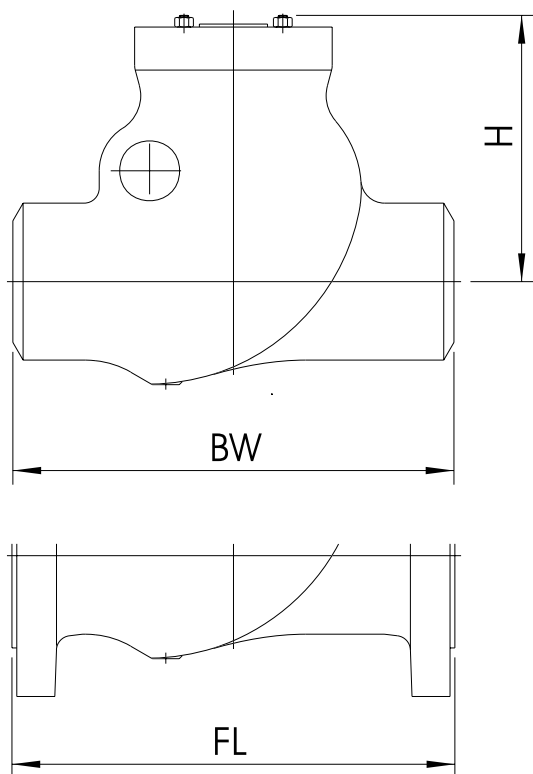
Trim No	Nominal Trim Symbol	Material Type					Small internal parts	Service
		Seal surfaces	Disc/Wedge surfaces	Stem Hinge pin	Backseat			
1	CR13	13% Cr	13% Cr	13% Cr	13% Cr	13% Cr	General erosive or non-corrosive service between -100°C and 400°C	
2	18-8	304	304	304	304	304	For moderate pressure in non-erosive, corrosive service between -265°C and 320°C	
3	25-20	310	310	310	310	310	For moderate pressure in corrosive or non corrosive service. Between -265°C and 450°C	
4	SH	Hard 13% Cr	Hard 13% Cr	13% Cr	13% Cr	13% Cr	As trim No 1 but for medium pressure	
5	HF	Co-Cr A	Co-Cr A	13% Cr	13% Cr	13% Cr	High pressure slightly erosive and corrosive service between -265°C and 650°C	
5A	HFNi	Ni-Cr	Ni-Cr	13% Cr	13% Cr	13% Cr	As trim No 5 where Co is not allowed	
6	Cr13 Ni-Cu	Ni-Cu	13% Cr	13% Cr	13% Cr	13% Cr	As trim No 1	
7	CR13 SH	Hard 13% Cr	13% Cr	13% Cr	13% Cr	13% Cr	As trim No 1 but for moderate pressure	
8	CR13 HF	Co-Cr A	13% Cr	13% Cr	13% Cr	13% Cr	As trim No 5 for moderate pressure	
8A	CR13 HFNi	Ni-Cr	13% Cr	13% Cr	13% Cr	13% Cr	As trim No 5A for moderate pressure	
9	Ni-Cu	Ni-Cu	Ni-Cu	Ni-Cu	Ni-Cu	Ni-Cu	Very corrosive fluids. Erosive-corrosive service between -240°C and 480°C	
10	18-8SMO	316	316	316	316	316	As trim No 2	
11	Ni-Cu HF	Co-Cr A	Ni-Cu	Ni-Cu	Ni-Cu	Ni-Cu	As trim No 9 but for medium pressure	
12	18-8SMO HF	Co-Cr A	316	316	316	316	As trim No 10 but for medium pressure	
13	Alloy 20	19Cr-29Ni	19Cr-29Ni	19Cr-29Ni	19Cr-29Ni	19Cr-29Ni	Very corrosive service. For moderate pressure between -45°C and 320°C	
14	Alloy 20 HF	Co-Cr A	19Cr-29Ni	19Cr-29Ni	19Cr-29Ni	19Cr-29Ni	As trim No 13 but for medium pressure	

Co-Cr A is equivalent to Stellite® 6

Check Valves

Cast high pressure -Style B-

Pressure Seal Configuration



Notes

1. All dimensions are in mm.
2. Sizes and classes larger than mentioned here are available: please consult supplier for more information.
3. W1 corresponds to weight in kilos for flanged body style. For sizes larger than 24", weight depends on flange standards.
4. W2 corresponds to weight in kilos for welding body style.

ASME class 900 (Fig. VR 900 PS)

Size	FL	BW	H	W1	W2
mm inch					
50	2	-	-	-	-
65	2 1/2	-	-	-	-
80	3	381	381	235	70 47
100	4	457	457	265	135 72
125	5	-	-	-	-
150	6	610	508	370	275 160
200	8	737	660	450	470 300
250	10	838	787	500	625 460
300	12	965	914	555	950 690
350	14	1029	991	620	1400 960
400	16	1130	1092	680	1650 1290
450	18	1219	1143	730	2230 1750
500	20	1321	1245	780	2850 2290
550	22	-	-	-	-
600	24	1549	1397	850	4300 3530

ASME class 1500 (Fig. VR 1500 PS)

FL	BW	H	W1	W2
368	368	205	45	32
419	419	220	80	48
470	470	250	95	58
546	546	295	150	100
-	-	-	-	-
705	559	390	370	220
832	711	470	640	425
991	864	535	1250	700
1130	991	610	1750	1130
1257	1067	700	2400	1455
1384	1194	770	3235	1970
1537	1346	830	3880	2890
1664	1473	850	5510	3800
-	-	-	-	-
1943	1752	980	7400	5000

ASME class 2500 (Fig. VR 2500 PS)

FL	BW	H	W1	W2
451	451	235	90	48
508	508	240	140	78
578	578	285	160	98
673	673	310	220	148
-	-	-	-	-
914	610	415	610	305
1022	762	555	1300	655
1270	914	640	1900	985
1422	1041	665	2850	1410
-	1118	600	-	1800
-	1245	700	-	2300
-	1397	770	-	2770
-	1524	840	-	3340
-	-	-	-	-
-	1676	950	-	4660

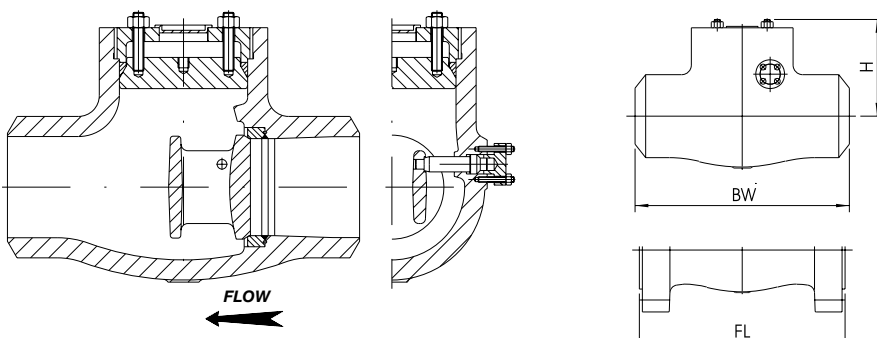
Check Valves

Cast high pressure -Style B-

Notes

1. All dimensions are in mm.
2. Sizes and classes larger than mentioned here are available: please consult supplier for more information.
3. W1 corresponds to weight in kilos for flanged body style. For sizes larger than 24", weight depends on flange standards.
4. W2 corresponds to weight in kilos for welding body style.

Pressure Seal Configuration



ASME class 900 (Fig. TD 900 PS)

Size mm inch	FL	BW	H	W1	W2
80 3	381	305	170	55	35
100 4	457	356	200	100	65
125 5	-	-	-	-	-
150 6	610	508	250	215	115
200 8	737	660	280	345	200
250 10	838	787	330	500	330
300 12	965	914	365	790	560
350 14	1029	991	400	1120	720
400 16	1130	1092	430	1500	1200
450 18	1219	1143	470	2160	1650
500 20	1321	1245	550	2750	2150
550 22	-	-	-	-	-
600 24	1549	1397	730	4270	3280

ASME class 1500 (Fig. TD 1500 PS)

FL	BW	H	W1	W2
470	305	185	77	40
546	406	205	125	75
-	-	-	-	-
705	559	235	275	155
832	711	295	450	290
991	864	330	940	510
1130	991	400	1435	835
1257	1067	490	2010	1230
1384	1194	570	2130	1560
1537	1346	630	2491	2070
1664	1473	660	4000	2740
-	-	-	-	-
1943	1752	780	6435	4635

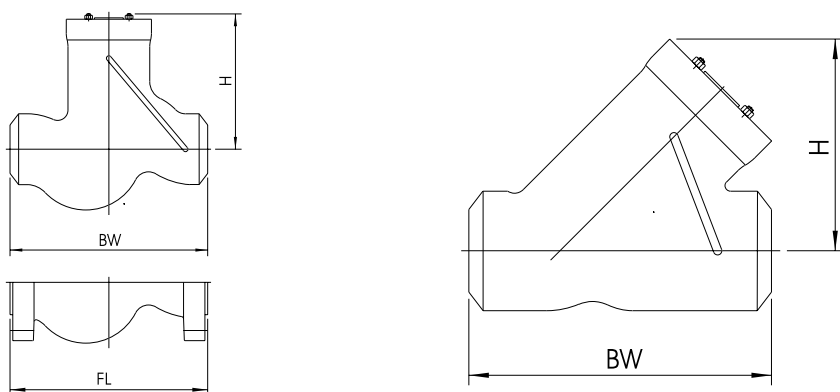
ASME class 2500 (Fig. TD 2500 PS)

FL	BW	H	W1	W2
578	368	160	120	40
673	457	190	235	120
-	-	-	-	-
914	610	245	620	300
1022	762	330	990	550
1270	914	330	1725	900
1422	1041	430	2400	1300
-	1118	480	-	1900
-	1245	520	-	2820
-	1397	550	-	3410
-	1524	590	-	4330
-	-	-	-	-
-	1676	780	-	6070

Notes

1. All dimensions are in mm.
2. Sizes and classes larger than mentioned here are available: please consult supplier for more information.
3. W1 corresponds to weight in kilos for flanged body style.
4. W2 corresponds to weight in kilos for welding body style.

Pressure Seal Configuration



ASME class 900 (Fig. PC 900 PS)

ASME class 1500 (Fig. PC 1500 PS)

ASME class 2500 (Fig. PC 2500 PS)

ASME class 1500 (Fig. PY 1500 PS)

ASME class 2500 (Fig. PY 2500 PS)

T pattern

Size mm inch	FL	BW	H	W1	W2	FL	BW	H	W1	W2	FL	BW	H	W1	W2
50 2	-	-	-	-	-	368	368	240	60	40	451	451	330	70	60
65 2 1/2	-	-	-	-	-	419	419	275	80	55	508	508	260	115	65
80 3	381	381	270	65	50	470	470	280	100	65	578	578	280	185	100
100 4	457	457	335	135	95	546	546	335	155	100	673	673	330	355	170
125 5	-	-	-	-	-	-	-	-	-	-	-	-	-	-	-
150 6	610	610	400	250	190	705	705	390	280	245	914	914	390	720	435
200 8	737	737	490	445	300	832	832	470	660	500	1022	1022	460	1100	610
250 10	838	838	565	695	480	991	991	580	890	610	1270	1270	580	1540	840
300 12	965	965	665	1045	760	1130	1130	680	1380	850	1422	1041	640	2090	960
350 14	-	-	-	-	-	-	-	-	-	-	-	-	-	-	-
400 16	-	-	-	-	-	-	-	-	-	-	-	-	-	-	-
450 18	-	-	-	-	-	-	-	-	-	-	-	-	-	-	-
500 20	-	-	-	-	-	-	-	-	-	-	-	-	-	-	-
550 22	-	-	-	-	-	-	-	-	-	-	-	-	-	-	-
600 24	-	-	-	-	-	-	-	-	-	-	-	-	-	-	-

Y pattern

BW	H	W	BW	H	W
-	-	-	-	-	-
-	-	-	-	-	-
381	250	50	368	240	85
406	290	85	457	320	130
-	-	-	-	-	-
559	360	215	610	350	330
711	440	430	762	460	645
864	590	660	914	610	1025
991	640	960	1041	650	1200
1067	700	1000	1130	720	1360
1194	750	1550	1245	800	2150
1473	810	1800	1397	870	2975
1676	890	2490	1524	960	3630
-	-	-	-	-	-
1727	1050	3000	1829	1220	5650